



Unauthenticated

Before exploring specific aesthetic stimuli we must define further

Microprocessors

and property fell into the hands of the bourgeoisie. They capitalized on

Photochemically

Kulischer's *Allgemeine Wirtschaftsgeschichte* quotes instructions

Orthographically

Now we need to investigate more deeply the structure

Macromolecular

Bongard continues, 'are reputation, prejudice, stereotype, representation

Noninterference

For them it belongs to the realm, *natura naturata*

Mischiefmakers

Fabric Sans
Type specimen



Fabric Sans

Type specimen

Designers

Frode Helland, Sindre Bremnes

Released

2020

Version

1.000

Fabric Sans Styles

Sans Regular
Sans Regular Italic
Sans Medium
Sans Medium Italic
Sans Bold
Sans Bold Italic
Sans Black
Sans Black Italic

Fabric Sans Display Styles*

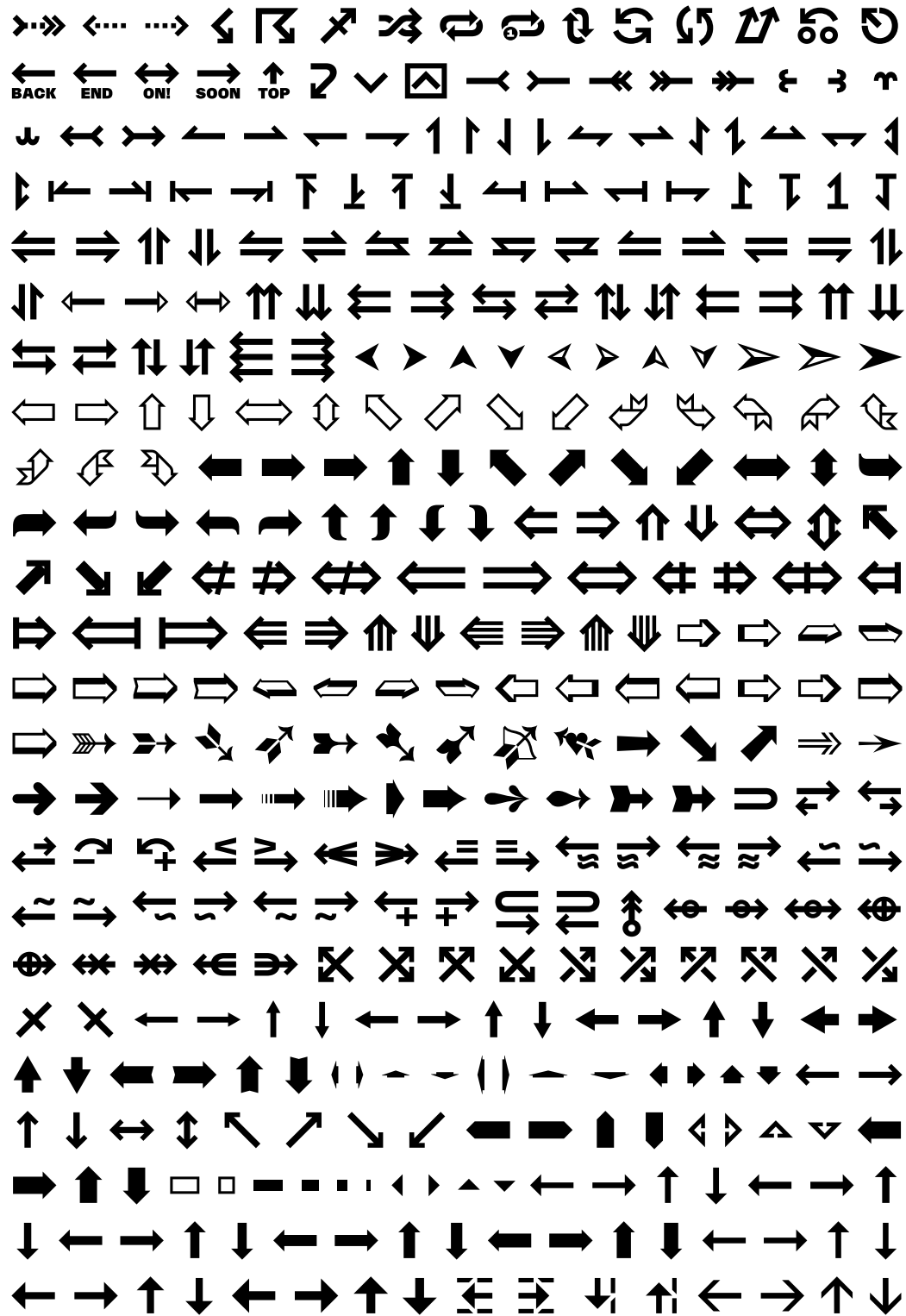
Sans Display Regular
Sans Display Regular It.
Sans Display Medium
Sans Display Medium It.
Sans Display Bold
Sans Display Bold It.
Sans Display Black
Sans Display Black It.



Fabric Sans

Type specimen

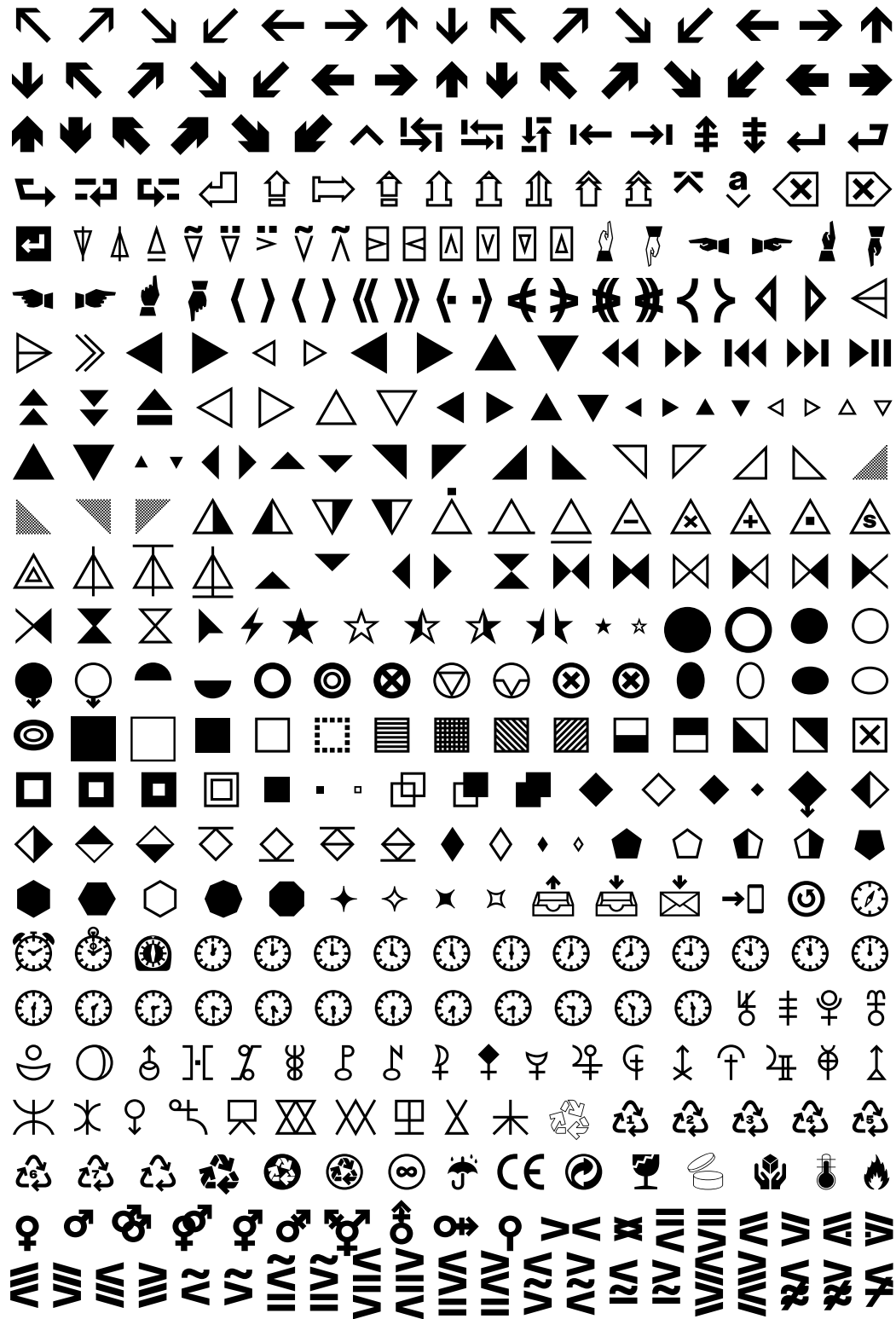
Character set Latin A Extended (full)
Latin B Extended (partial)
Latin Extended Additional (partial)
All arrows in Unicode



Fabric Sans

Type specimen

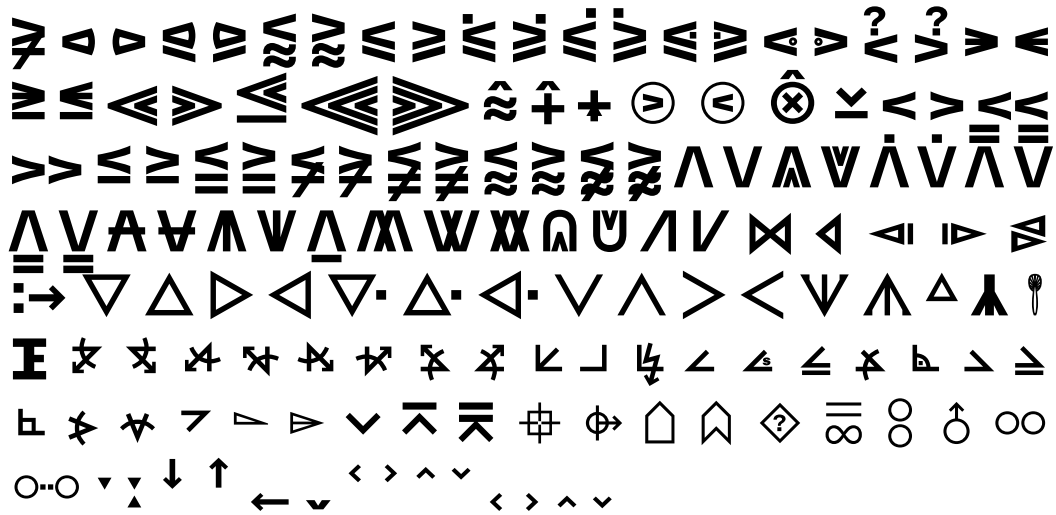
Character set Latin A Extended (full)
Latin B Extended (partial)
Latin Extended Additional (partial)
All arrows in Unicode



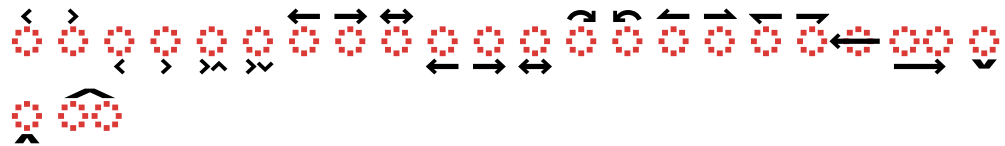
Fabric Sans

Type specimen

Character set Latin A Extended (full)
Latin B Extended (partial)
Latin Extended Additional (partial)
All arrows in Unicode



Combining arrows



Fabric Sans

Type specimen

OpenType™
features

Activated feature

Selection → **Effect**

Glyph composition/decomposition (CCMP)*

j + ˙ → j

Discretionary ligatures (DLIG)

íj → íj

Localized forms (LOCL)*†

tançoş → tançoş

Contextual alternates (CALT)*

gjennom → gjennom

Fractions (FRAC)

138/675 → 138/675

Capital spacing (CPSP)

ABC → ABC

Superscript (SUPS)

H123 → H¹²³

Case-sensitive forms (CASE)

HUAIR → HUAIR

Subscript (SUBS)

H123aeo → H_{123aeo}

Kerning (KERN)*

SAVANT → SAVANT

Tabular figures (TNUM)*

123 → 123

Mark positioning (MARK)*

P + ö → Pö

Proportional figures (PNUM)

123 → 123

Mark to mark positioning (MKMK)*

o + ˘ + ˙ + ˚ → o˘˙˚

Ordinals (ORDN)

2a → 2^a

* Features activated by default

† In combination with language settings

Languages

Abenaki, Afaan Oromo, Afar, Afrikaans, Albanian, Aleut, Alsatian, Amis, Anuta, Apache, Aragonese, Aranese, Aromanian, Arrernte, Arvanitic (Latin), Asturian, Atayal, Ayacucho Quechua, Aymara, Azeri, Basque, Belarusian Łacinka, Bemba, Bergamasque, Bikol, Bolognese, Bosnian (Latin), Breton, Cape Verdean Creole, Carolinian, Catalan, Cebuano, Chamorro, Chavacano, Chichewa, Cimbrian, Cofán, Cornish, Corsican, Creek, Crimean Tatar (Latin), Croatian, Czech, Danish, Dawan, Drehu, Dutch, Elfdalian, English, Esperanto, Estonian, Eurōpājóm (Reconstructed Indo-European), Evenki (Latin), Extremaduran, Faroese, Fijian, Filipino (Tagalog), Finnish, Volkspraak, Franco-Provençal, French, Frisian, Friulian, Gaelic, Gagauz, Galician, Genoese, German, Gikuyu, Gilbertese, Gothic (transliteration), Greenlandic (pre- and post-1973), Guadeloupean Creole, Gwich'in, Haitian Creole, Hawai'ian, Hiligaynon, Hopi, Hotçak (Latin), Hungarian, Hupa, Icelandic, Ido, Ilocano, Inari Sami, Indonesian, Ingrian, Interglossa, Interlingua (IALA), Interlingua (LSF), Iñupiaq (Alaskan, Atchagat, Canadian), Irish, Istro-Romanian, Italian, Jamaican Patois, Javanese, Jèrriais, Kaingang, Kalaw Lagaw Ya, Kapampangan, Kaqchikel, Karakalpak (Latin), Karelian, Kashubian, Kazakh (Latin), Kinyarwanda, Kirundi, Kurdish (Kurmanji), Kven, Ladín, Latgalian, Latin, Latvian, Laz, Ligurian, Limburgish, Lithuanian, Livonian, Ljoban, Lombard, Low Saxon, Ludic, Lule Sami, Luxembourgish, Maasai, Makhuwa, Malagasy, Malay, Maltese, Manx, Māori, Marquesan, Marshallese, Meänkieli, Meriam Mir, Milanese, Mirandese, Mohawk, Moldovan (Latin), Montagnais, Montenegrin, Munsee and Unami (Delaware languages), Murrinh-Patha, Nagamese Creole, Nahuatl, Nauruan, Navaho, Ndebele, Neapolitan, Ngiyambaa, Niuean, Noongar, Norman, Northern Sami, Northern Sotho, Norwegian, Novial, Nynorn, Occidental/Interlingue, Occitan, Old Icelandic, Old Norse, Oshiwambo, Palauan, Papiamentu, Picard, Piedmontese, Polish, Portuguese, Potawatomi, Proto-Norse (transliteration), Q'eqchi', Quechua, Rarotongan, Rhaeto-Romance, Romanian, Romansh, Romany, Rotokas, Samoan, Samogitian, Sango, Sanskrit (Transcription), Saramaccan, Sardinian, Seri, Seychellois Creole, Shawnee, Shona, Sicilian, Silesian, Skolt Sami, Slovak, Slovenian, Slvio (Latin), Somali, Sorbian (Upper and Lower), Southern Sami, Southern Sotho, Spanish, Sranan, Sundanese, Swahili, Swazi, Swedish, Tahitian, Tatar, Tetum, Tłchq, Tok Pisin, Tokelauan, Tongan, Tshiluba, Tsonga, Tswana, Tumbuka, Turkish, Turkmen (Latin), Tuvaluan, Tzotzil, Uzbek (Latin), Venetian, Veps, Vilamovian, Volapük, Võro/Seto, Votic, Wallisian, Walloon, Waray-Waray, Warlpiri, Wayuu, Welsh, Wik-Mungkan, Wiradjuri, Xavante, Xhosa, Yapese, Yindjibarndi, Yup'ik (Central Alaskan), Zazaki, Zulu and Zuni.

Fabric
Fabric